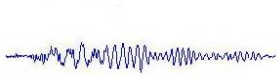




()



$M_s = /$

()

()

()

(-)



(-)

()

) -

()

(

()

// . Ms / - /

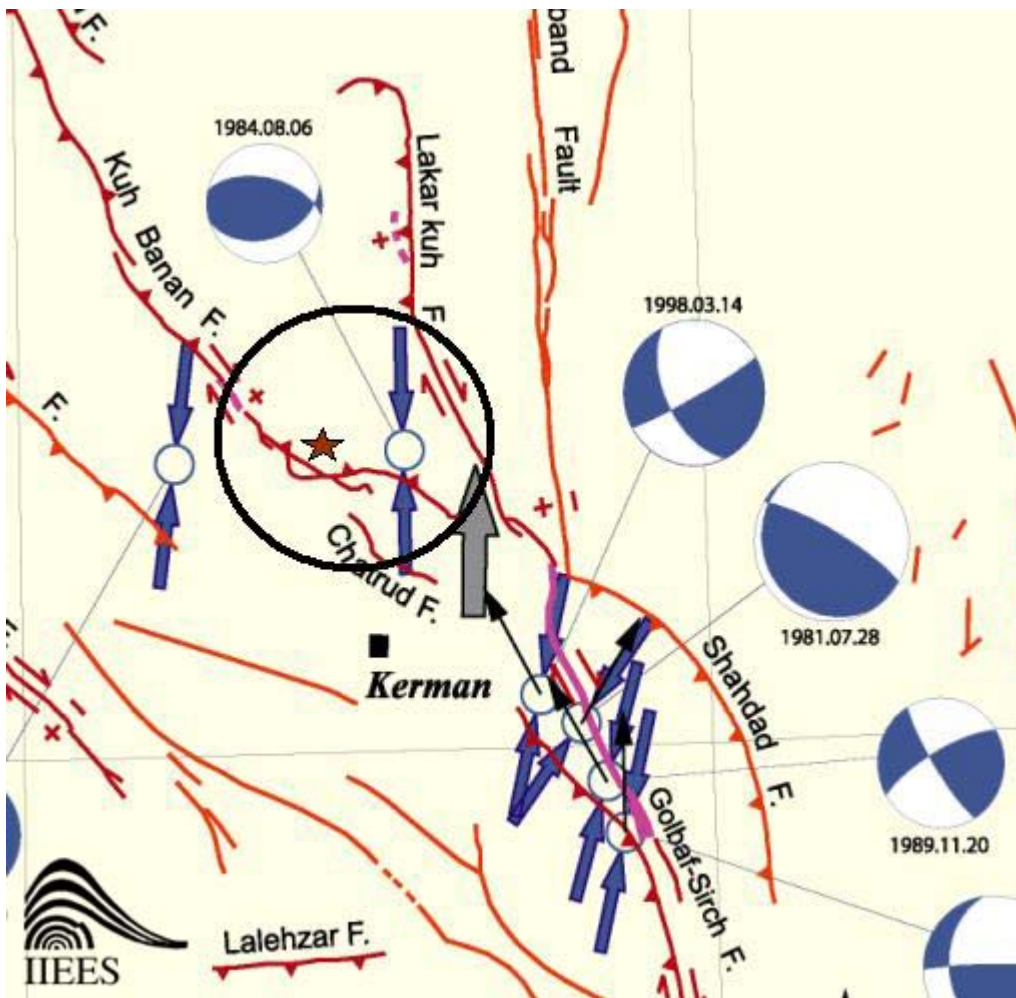
Mw / - /

Ms /

//

Mw /

()



() :(-)

()

//

/

:(-)



.(//) . (

. Ms=

() (-) - . (

. // () - . (

. Ms /

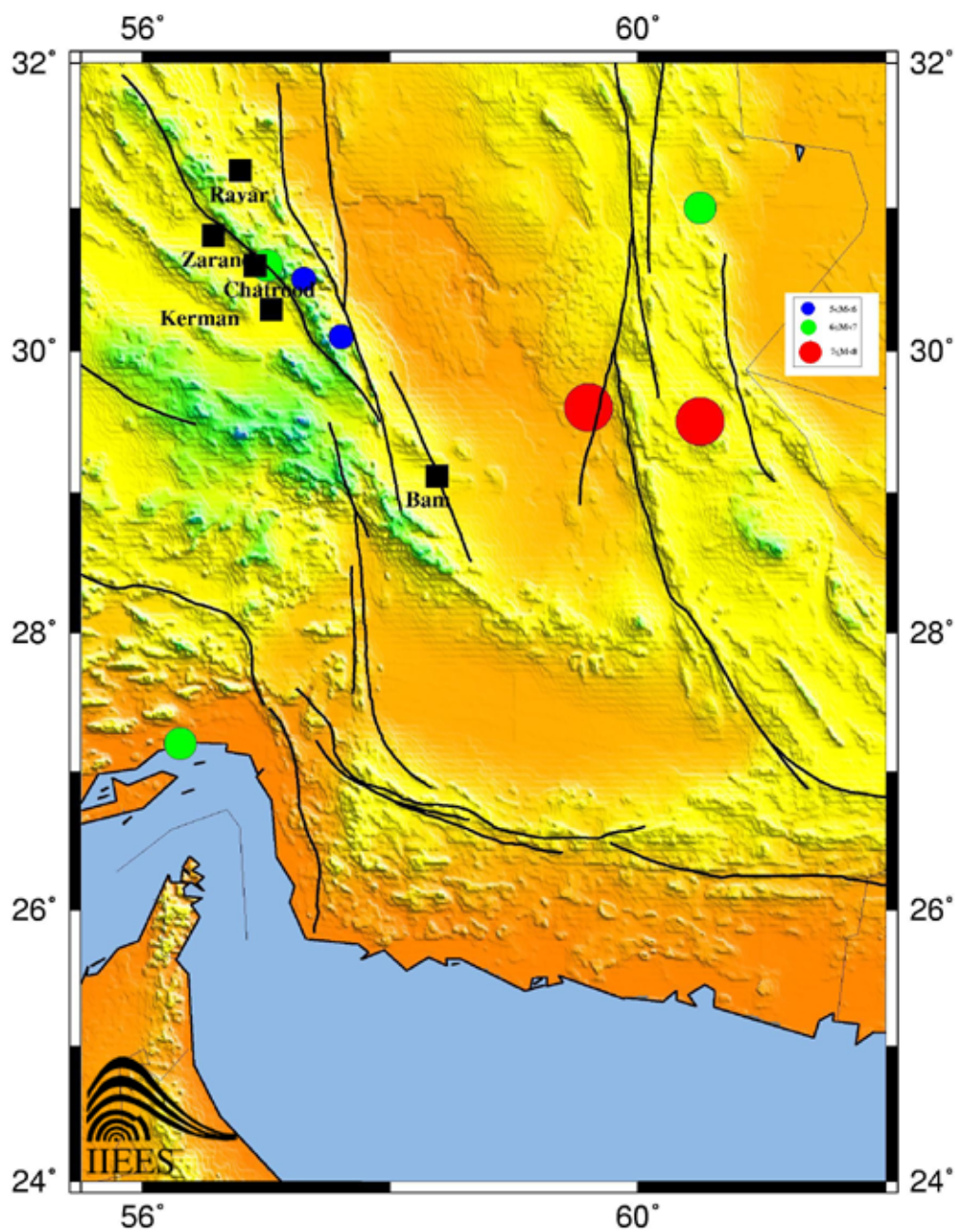
: (-)

.(//) . (

(°)

.(//) . (

() .



:(-)



.(//) () . (

mb /

Ms=

Ms / .(//) . (

.(//) () . (

° N

Ms / mb / . ()

//

//

//

//



. // .(//) . (

Ms / mb /

// . ()

() ()

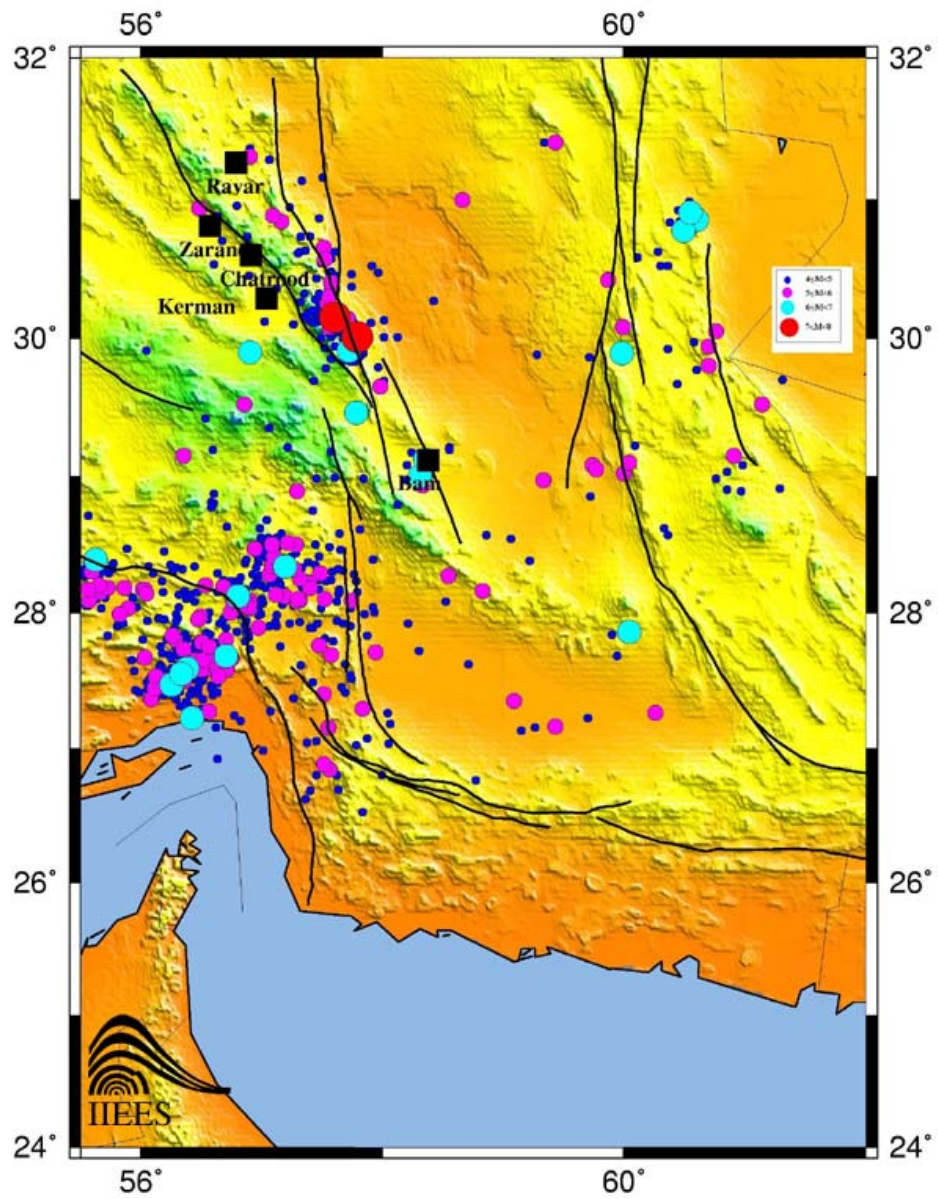
.(//)() . (

Ms /

()

VIII

//



:(-)

//



()

$M_w = /$ (

$(M_w = /) ()$ -

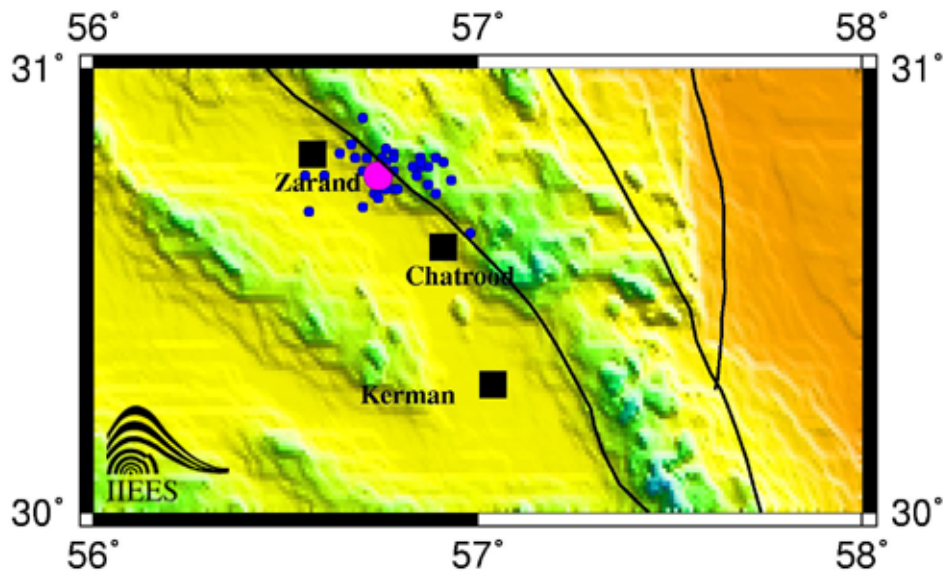
$M_w = /$

(GMT : :)

/

.(-) /

()



()

:(-)

()

-

- .(-)

-

(- -) .(-)

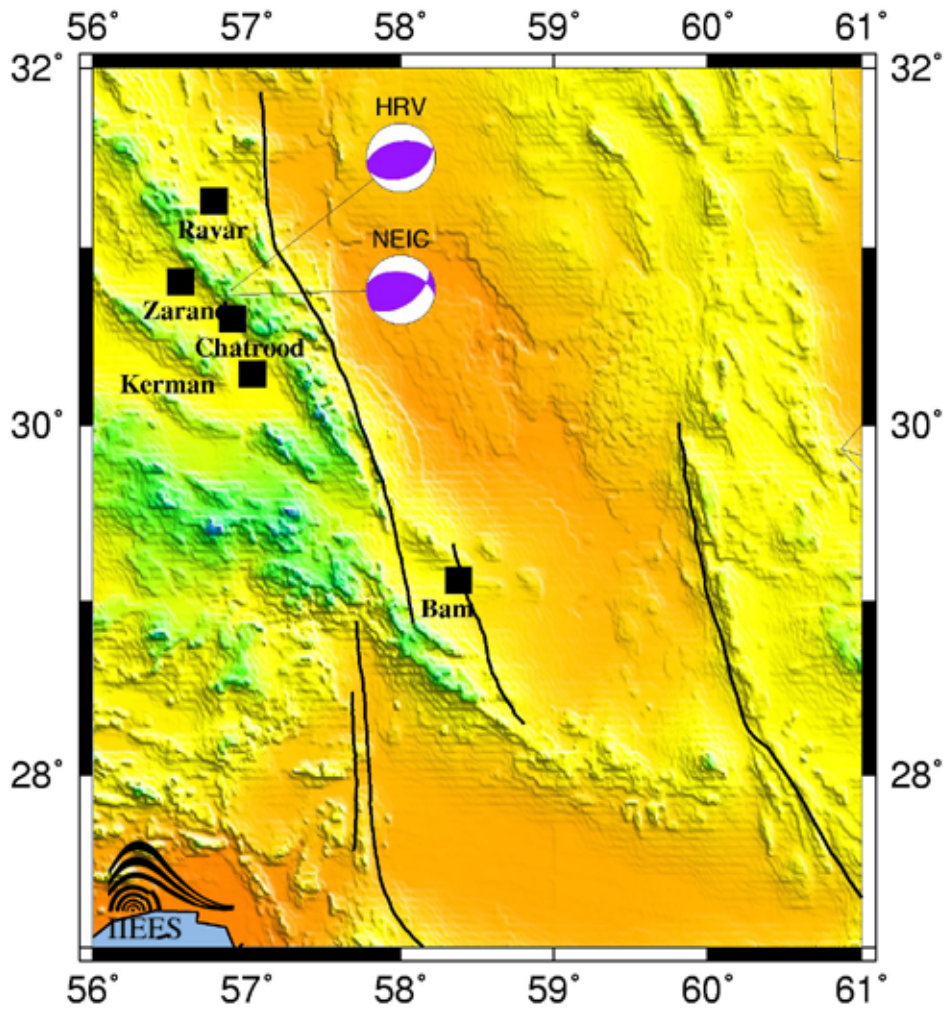
(-)

(-)

(-)

/

/



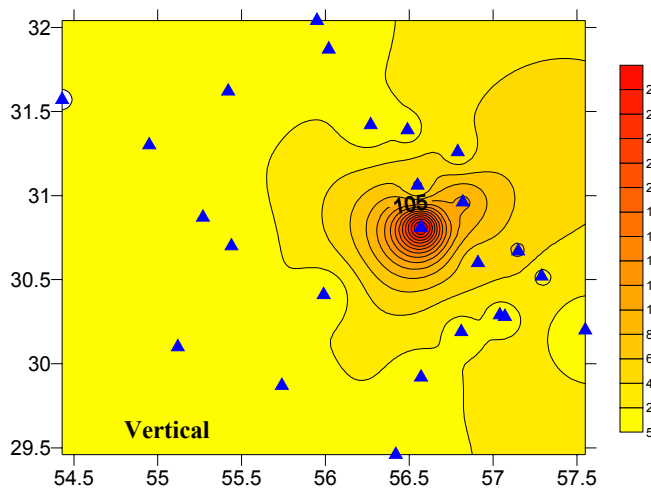
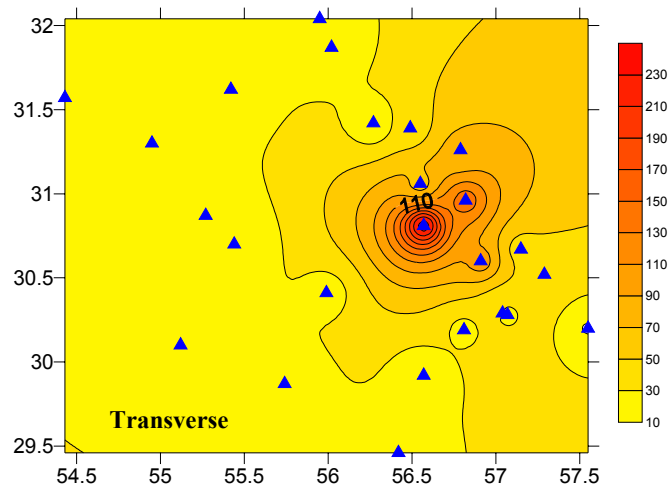
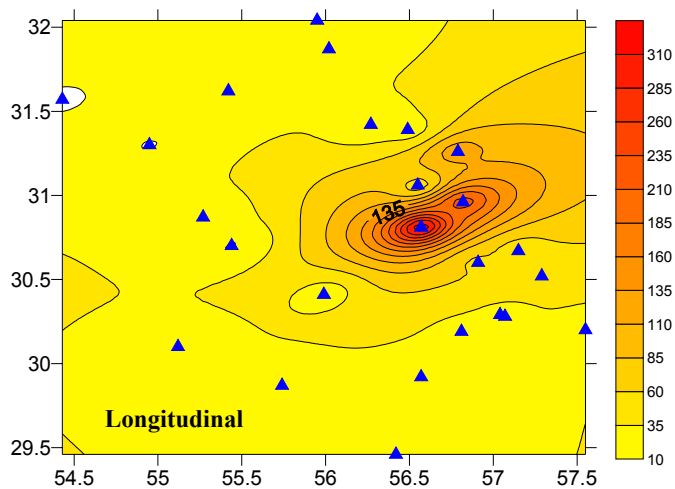
NEIC, HRV ()

:(-)



: -

Station	Record No.	of Coordinates Stations		Uncorrected (PGA(cm/s/s)			Altitude (m)	Azimuth of Accelerographs	
		E	N	L	V	T		L	T
<u>Shirinrood Dam</u>	<u>3697/01</u>	57.031	30.811	510.09	252.13	202.55	1788	95	185
<u>Zarand</u>	<u>3671/01</u>	56.57	30.81	323.14	309.12	240.54	1678	34	124
<u>Ravar</u>	<u>3661</u>	56.79	31.26	120.94	33.59	75.02	1244	320	50
<u>Chatrood</u>	<u>3660/01</u>	56.91	30.60	56.78	53.18	100.11	1841	60	150
<u>Dasht-e-Khak</u>	<u>3686</u>	56.55	31.06	50.57	42.24	62.84	2226	210	300
<u>Deh-Loulou</u>	<u>3679</u>	57.29	30.52	51.75	21.58	32.82	2069	150	240
<u>Tarz</u>	<u>3665</u>	56.49	31.39	24.99	16.74	35.53	1820	158	248
<u>Kerman 1</u>	<u>3662</u>	57.04	30.29	33.11	17.84	30.76	1767	170	260
<u>Baghin</u>	<u>3663</u>	56.81	30.19	26.47	15.74	24.32	1718	100	190
<u>Kerman 2</u>	<u>3687</u>	57.07	30.28	24.48	22.94	26.33	1755	147	237
<u>Rafsanjan</u>	<u>3673</u>	55.99	30.41	23.59	9.76	20.82	1520	340	70
<u>Molea Esmaeel</u>	<u>3678</u>	55.95	32.04	13.38	7.04	19.76	1346	310	40
<u>ShahreBabak</u>	<u>3685</u>	55.12	30.10	14.01	11.73	18.55	1840	86	176
<u>Anar</u>	<u>3674</u>	55.27	30.87	18.37	8.59	15.03	1423	24	114
<u>Bahadoran</u>	<u>3666</u>	54.95	31.30	9.54	7.06	15.44	1460	135	225
<u>Bahabad</u>	<u>3669</u>	56.02	31.87	12.54	7.24	14.22	1373	160	250
<u>Bafgh</u>	<u>3668</u>	55.42	31.62	11.08	5.67	13.79	951	102	192
<u>Sirch</u>	<u>3672</u>	57.55	30.20	13.15	5.70	8.83	1685	30	120
<u>Cheshmeh sabz</u>	<u>3675</u>	56.42	29.46	10.38	4.77	12.51	2581	65	155
<u>Bardsir</u>	<u>3667</u>	56.57	29.92	10.94	12.16	12.36	2113	75	165
<u>Pariz</u>	<u>3684</u>	55.74	29.87	12.20	6.43	12.32	2325	10	100
<u>Koohbanan</u>	<u>3677</u>	56.27	31.42	12.28	7.48	10.13	2008	170	260
<u>Mehriz</u>	<u>3664</u>	54.43	31.57	7.88	4.50	11.45	1480	320	50
<u>Bayaz</u>	<u>3670</u>	55.44	30.70	9.09	10.04	10.86	1453	140	230
<u>Horjand</u>	<u>3688</u>	57.15	30.67	46.86	67.69	41.43	2320	0	90
<u>Qadrooni Dam</u>	<u>3689/01</u>	56.82	30.96	218.87	108.09	142.11	1665	170	260



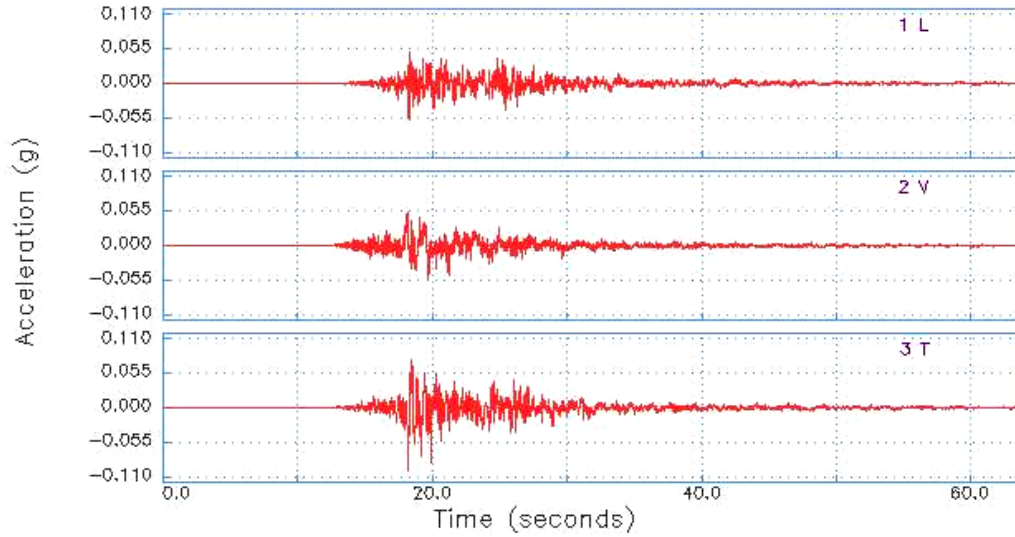
:(-)



Building and Housing Research Center (BHRC)
Iran Strong Motion Network (ISMN)

Station: **Chatrood**

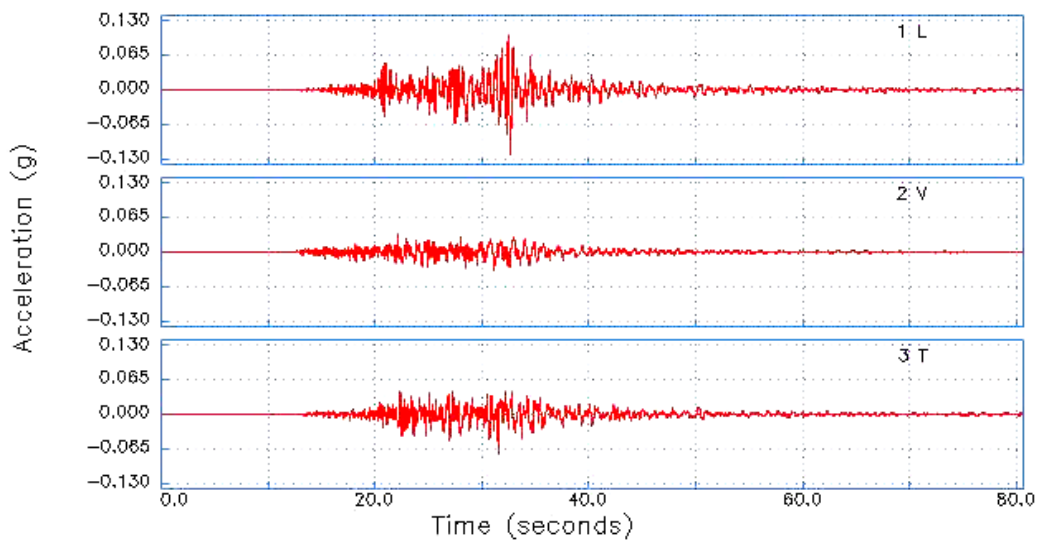
Rec.No: **3660-1**



Building and Housing Research Center (BHRC)
Iran Strong Motion Network (ISMN)

Station: **Ravar**

Rec.No: **3661**

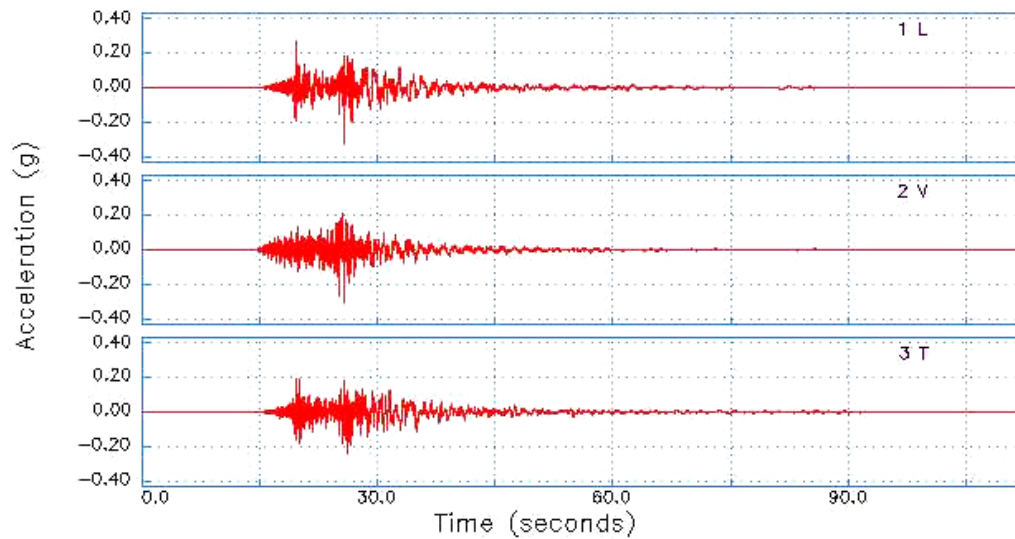


:(-)



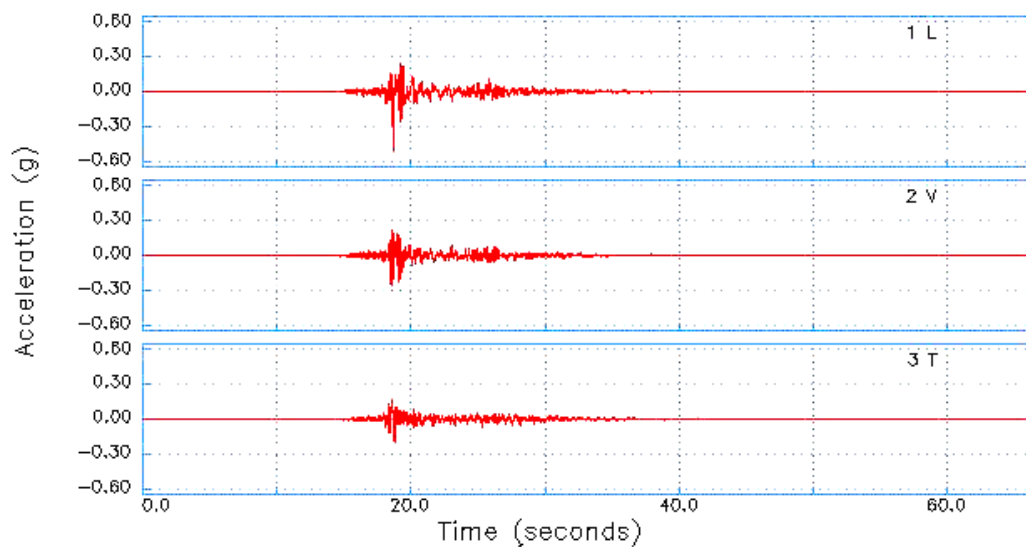
Building and Housing Research Center (BHRC)
Iran Strong Motion Network (ISMN)

Station: Zarand
Rec.No: 3671-1



Building and Housing Research Center (BHRC)
Iran Strong Motion Network (ISMN)

Station: Shirinrood Dam
Rec.No: 3697-1



:(-)



: -

Date(yyyy/mm/dd)	Time(UTC)	Latitude	Longitude	Depth	mb	Ms	ML	Mw	Reference
2005/02/22	02:25:20	30.76	56.74	14		6.5			IIEES
2005/02/22	02:41:11	30.81	56.78	14			4.2		IIEES
2005/02/22	03:00:26	30.78	56.73	14			3.6		IIEES
2005/02/22	03:15:15	30.81	56.64	14			3.3		IIEES
2005/02/22	03:31:12	30.79	56.91	16			3.8		IIEES
2005/02/22	05:08:30	30.78	56.87	15			4.0		IIEES
2005/02/22	05:26:48	30.78	56.85	14			4.2		IIEES
2005/02/22	05:56:38	30.78	56.85	15			3.3		IIEES
2005/02/22	06:06:31	30.82	56.76	15			3.9		IIEES
2005/02/22	06:48:08	30.78	56.83	10			3.6		IIEES
2005/02/22	09:50:39	30.72	56.89	18			3.6		IIEES
2005/02/22	14:13:50	30.72	56.73	16			3.0		IIEES
2005/02/22	15:21:36	30.73	56.74	14			3.5		IIEES
2005/02/22	16:59:37	30.75	56.93	17			3.6		IIEES
2005/02/22	17:31:28	30.80	56.85	14			3.5		IIEES
2005/02/22	20:46:05	30.74	56.87	15			3.0		IIEES
2005/02/22	23:05:30	30.76	56.76	14			3.0		IIEES
2005/02/23	01:58:08	30.79	56.85	15			3.1		IIEES
2005/02/23	04:16:41	30.73	56.78	16			3.1		IIEES
2005/02/23	04:43:06	30.76	56.55	15			3.0		IIEES
2005/02/23	05:48:49	30.63	56.98	14			2.9		IIEES
2005/02/23	05:57:04	30.80	56.78	14			3.1		IIEES
2005/02/23	06:16:42	30.89	56.70	14			3.1		IIEES
2005/02/23	08:18:30	30.80	56.89	14			3.1		IIEES
2005/02/23	08:29:22	30.76	56.73	14			3.3		IIEES
2005/02/23	09:08:32	30.68	56.56	18			3.1		IIEES
2005/02/23	10:54:19	30.77	56.78	8			3.1		IIEES
2005/02/23	15:52:43	30.77	56.70	14			3.1		IIEES
2005/02/23	16:54:18	30.76	56.60	14			2.8		IIEES
2005/02/23	17:19:09	30.71	56.74	18			3.7		IIEES
2005/02/23	17:36:13	30.76	56.75	14			3.0		IIEES
2005/02/23	18:18:11	30.80	56.75	14			2.8		IIEES
2005/02/23	21:07:47	30.73	56.79	14			2.6		IIEES
2005/02/23	22:15:41	30.77	56.78	16			3.0		IIEES
2005/02/23	22:54:08	30.83	56.67	14			3.3		IIEES
2005/02/23	23:36:06	30.79	56.76	14			2.9		IIEES
2005/02/24	07:07:24	30.69	56.70	14			3.0		IIEES
2005/02/24	08:39:33	30.77	56.74	14			3.8		IIEES
2005/02/24	21:49:45	30.80	56.71	14			3.0		IIEES
2005/02/24	23:26:30	30.77	56.76	14			4.1		IIEES
2005/02/24	23:36:42	30.76	56.84	17			3.2		IIEES
2005/02/25	01:12:00	30.73	56.76	18			4.3		IIEES
2005/02/25	03:17:45	30.80	56.68	14			3.3		IIEES



-

CMT

.(-)

-

.

.(- -)

.(-)

.

.

.

.

.

.(-)



-

:(-)



- : (-)



: (-)



:(-)





-

:(-)

-

CMG-6TD

.(-)

SSA-2

$M_L = / - /$

(-)

